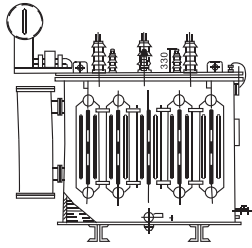


S9,S9-M SERIES THREE PHASE OIL-IMMERSED POWER TRANSFORMER

GENERAL

Different from normal type, S9,S9-M series three phase oil-immersed transformer is cooled by the corrugated plate of tank without conservator. It is applicable to 10kV-110KV, 50Hz power transmission and distribution system for power supply and lighting in industrial and agricultural field.



FEATURE

1. Energy saved :

Compared with old type S7, no-load loss decreases 10.25% averagely and on load current decreases 37.9%, which means 18.39% operation cost is reduced.

2. Long-term reliable service life:

Fully enclosed transformer tank and rim shall be bolted together or welded firmly. Isolation between oil and air keeps insulation away from moisture, which lowers insulation aging and improves service life.

3. Free from untanking:

Free from untanking before operation, so its cost is saved.

4. Free from maintenance

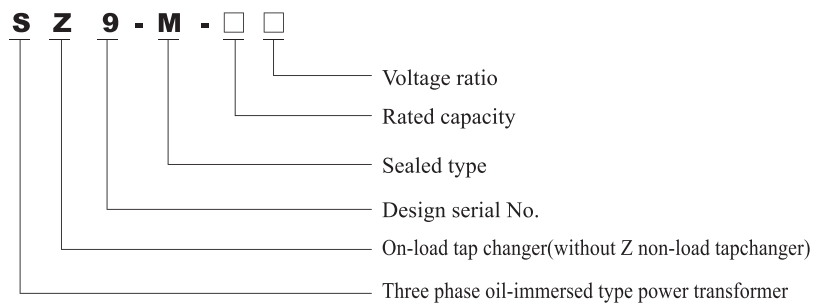
5. Low noise:

Impacted structure in design, new material and new technology adopted and low noise.

6. Small size and artistic appearance:

Owing to the corrugated plate used for radiation, oil volume is changed by adjustment and compensation through expansion and shrinkage of corrugated plate when the temperature of oil is changed. Corrugated tank is small size in good looking.

TYPE DESIGNATION



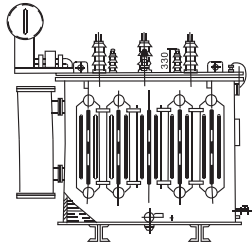
OPERATION CONDITION

- 1 Max ambient temperature: +40°C
2. Min ambient temperature: -30°C (outdoor type)
3. daily mean temperature: <30°C annual mean temperature <20°C

S9,S9-M SERIES THREE PHASE OIL-IMMERSED POWER TRANSFORMER

TECHNICAL SPECIFICATION FOR 10KV SA S9-M NO-LOAD VOLTAGE REGULATING OIL-IMMERSED TYPE POWER TRANSFORMER(Table 1)

| Rated Capacity (kVA) | Voltage combination | | | | No-load loss(W) | Load Loss (W) | No-Load Current (%) | Impedance Voltage (%) | Weight | | | Track Gauge A×B (mm) | Outline dimension(mm) L×W×H |
|----------------------|---|----------------------------|-------------|---------------------|-----------------|---------------|---------------------|-----------------------|-----------------------|------|---------|----------------------|-----------------------------|
| | High voltage (kV) | Tapping Range | Low Voltage | Vector Group | | | | | Insulation oil weight | | | | |
| 10 | 6; 6.3; 6.6; 10; 10.5; 11; | ±2× 2.5%; or ± 5% | 0.4 | Yyn0 or Dyn11 | 70 | 300 | 2.4 | 4.0 | 75 | 50 | 175 | 400×400 | 680×450×910 |
| 20 | | | | | 100 | 500 | 2.3 | | 115 | 65 | 235 | 400×400 | 720×580×960 |
| 30 | | | | | 130 | 600 | 2.1 | | 150 | 70 | 300 | 400×400 | 770×600×1000 |
| 50 | | | | | 170 | 870 | 2.0 | | 215 | 95 | 405 | 400×400 | 840×610×1030 |
| 63 | | | | | 200 | 1040 | 1.9 | | 240 | 100 | 445 | 400×450 | 845×630×1050 |
| 80 | | | | | 250 | 1250 | 1.8 | | 285 | 110 | 505 | 400×400 | 890×640×1070 |
| 100 | | | | | 290 | 1500 | 1.6 | | 330 | 115 | 570 | 400×450 | 1060×620×1140 |
| 125 | | | | | 340 | 1800 | 1.5 | | 375 | 135 | 650 | 400×550 | 1120×630×1180 |
| 160 | | | | | 400 | 2200 | 1.4 | | 465 | 150 | 735 | 550×550 | 1200×645×1170 |
| 200 | | | | | 480 | 2600 | 1.3 | | 525 | 160 | 895 | 550×550 | 1250×660×1210 |
| 250 | | | | | 560 | 3050 | 1.2 | 655 | 200 | 1075 | 550×650 | 1320×740×1270 | |
| 315 | | | | | 670 | 3650 | 1.1 | 730 | 235 | 1240 | 550×650 | 1345×760×1305 | |
| 400 | | | | | 800 | 4300 | 1.0 | 860 | 265 | 1375 | 550×650 | 1395×780×1360 | |
| 500 | | | | | 960 | 5150 | 1.0 | 1060 | 340 | 1705 | 660×750 | 1520×840×1390 | |
| 630 | | | | | 1200 | 6200 | 0.9 | 1225 | 350 | 2015 | 660×750 | 1535×850×1455 | |
| 800 | | | | | 1400 | 7500 | 0.8 | 1430 | 440 | 2405 | 820×850 | 1650×950×1540 | |
| 1000 | | | | | 1700 | 10300 | 0.7 | 1555 | 470 | 2500 | 820×850 | 1820×1100×1580 | |
| 1250 | | | | | 1950 | 12000 | 0.6 | 1820 | 620 | 3170 | 820×850 | 1840×1120×1605 | |
| 1600 | | | | | 2400 | 14500 | 0.6 | 2220 | 640 | 4600 | 820×900 | 1930×1160×1780 | |
| 2000 | | | | | 2900 | 17500 | 0.6 | 3095 | 975 | 5600 | 820×900 | 1980×1180×1950 | |

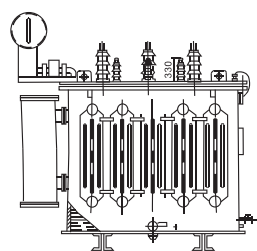


TECHNICAL SPECIFICATION FOR 35KV S9, S9-M SERIES DUAL WINDING NO-LOAD VOLTAGE REGULATING OIL-IMMERSED TYPE POWER TRANSFORMER(Table 2)

| Rated Capacity (kVA) | Voltage combination | | | | No-load loss(W) | Load Loss (W) | No-Load Current (%) | Impedance Voltage (%) | Weight | | | Track Gauge A×B (mm) | Outline dimension(mm) L×W×H |
|----------------------|---------------------|----------------------------|-------------|---------------------|-----------------|---------------|---------------------|-----------------------|-----------------------|------|-----------|----------------------|-----------------------------|
| | High voltage (kV) | Tapping Range | Low Voltage | Vector Group | | | | | Insulation oil weight | | | | |
| 50 | 35; | ±2× 2.5%; or ± 5% | 0.4 | Yyn0 or Dyn11 | 0.24 | 1.08 | 2.0 | 6.5 | 280 | 280 | 780 | 660×660 | 1135×925×1730 |
| 63 | | | | | 0.27 | 1.4 | 1.8 | | 325 | 300 | 855 | 660×660 | 1150×935×1835 |
| 80 | | | | | 0.32 | 1.6 | 1.8 | | 410 | 350 | 960 | 660×660 | 1180×1030×1850 |
| 100 | | | | | 0.345 | 1.71 | 1.6 | | 460 | 390 | 1110 | 660×660 | 1210×1080×1885 |
| 125 | | | | | 0.39 | 2.02 | 1.6 | | 530 | 430 | 1300 | 660×660 | 1245×1090×1950 |
| 160 | | | | | 0.43 | 2.4 | 1.6 | | 630 | 520 | 1660 | 660×660 | 1300×1100×2040 |
| 200 | | | | | 0.5 | 2.8 | 1.6 | | 770 | 520 | 1720 | 660×660 | 1340×1120×2040 |
| 250 | | | | | 0.59 | 3.34 | 1.6 | | 940 | 600 | 200 | 660×660 | 1420×1150×2090 |
| 315 | | | | | 0.7 | 4.02 | 1.5 | | 980 | 690 | 2070 | 660×660 | 1710×1180×2170 |
| 400 | | | | | 0.84 | 4.86 | 1.5 | | 1260 | 700 | 2430 | 820×820 | 1870×1110×2300 |
| 500 | | | | | 0.99 | 5.86 | 1.4 | 1600 | 970 | 3340 | 820×820 | 2380×1260×2420 | |
| 630 | | | | | 1.2 | 7 | 1.4 | 1770 | 1040 | 3560 | 820×820 | 2480×1100×2450 | |
| 800 | | | | | 1.42 | 8.4 | 1.3 | 2360 | 1160 | 4520 | 820×820 | 2560×1250×2820 | |
| 1000 | | | | | 1.5 | 12 | 1 | 2400 | 1280 | 4950 | 820×820 | 2580×1250×2820 | |
| 1250 | | | | | 1.8 | 14 | 0.9 | 2650 | 1350 | 5580 | 1070×1070 | 2600×1300×2820 | |
| 1600 | | | | | 2.1 | 17 | 0.85 | 7.0 | 3150 | 1460 | 6330 | 1070×1070 | 2620×1330×300 |
| 2000 | | | | | 2.6 | 19 | 0.75 | 3400 | 1490 | 6400 | 1070×1070 | 2700×1420×3060 | |
| 2500 | | | | | 3.1 | 21 | 0.75 | 3700 | 1520 | 6700 | 1070×1070 | 2800×1520×3140 | |

S9,S9-M SERIES THREE PHASE OIL-IMMERSED POWER TRANSFORMER

TECHNICAL SPECIFICATION FOR 10KV S9, S9-M SERIES NO-LOAD VOLTAGE REGULATING OIL-IMMERSED TYPE POWER TRANSFORMER(Table 3)



| Rated Capacity (kVA) | Voltage combination | | | | No-load loss(W) | Load Loss (W) | No-Load Current (%) | Impedance Voltage (%) | Weight | | | Track Gauge A×B (mm) | Outline dimension(mm) L×W×H |
|----------------------|-----------------------------------|----------------------------|---------------------|--------------|-----------------|---------------|---------------------|-----------------------|-----------------------|------|------|----------------------|-----------------------------|
| | High voltage (kV) | Tapping Range | Low Voltage | Vector Group | | | | | Insulation oil weight | | | | |
| 630 | 6; 6.3; 10; 10.5; 11; | ±2× 2.5%; or ± 5% | 3; 3.15; 6.3; | Yd11 | 1200 | 6200 | 1.4 | 4.5 | 1430 | 410 | 3185 | 660 × 750 | 1690×965×1440 |
| 800 | | | | | 1400 | 7500 | 1.3 | | 1640 | 665 | 3090 | 820 × 820 | 1885×1160×2125 |
| 1000 | | | | | 1700 | 10300 | 1.2 | | 1900 | 700 | 3300 | 820 × 820 | 1925×1240×2710 |
| 1250 | | | | | 1950 | 12000 | 1.2 | | 2180 | 870 | 4150 | 820 × 820 | 2010×1540×2180 |
| 1600 | | | | | 2400 | 14500 | 1.1 | | 2720 | 900 | 4860 | 820 × 820 | 2100×1760×2305 |
| 2000 | | | | | 2900 | 17500 | 0.9 | | 3000 | 940 | 5230 | 1070×1070 | 2120×1860×2315 |
| 2500 | | | | | 3430 | 20200 | 0.9 | | 3435 | 1120 | 5755 | 1070×1070 | 2140×2056×2365 |
| 3150 | | | | | 4140 | 23700 | 0.8 | | 4000 | 1550 | 7200 | 1070×1070 | 2470×2770×2555 |
| 4000 | | | | | 4980 | 28100 | 0.7 | | 4790 | 1620 | 8500 | 1070×1070 | 2720×2480×2860 |
| 5000 | | | | | 6020 | 32300 | 0.7 | | 5740 | 1730 | 9515 | 1070×1070 | 2810×2560×2920 |
| 6300 | 7050 | 36000 | 0.6 | | 7410 | 2050 | 11610 | 1070×1070 | 2850×2930×3010 | | | | |

TECHNICAL SPECIFICATION FOR 35KV, S9 SERIES NO-LOAD VOLTAGE REGULATING OIL-IMMERSED TYPE POWER TRANSFORMER(TABLE 4)

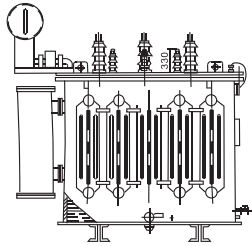
| Rated Capacity (kVA) | Voltage combination | | | | No-load loss(W) | Load Loss (W) | No-Load Current (%) | Impedance Voltage (%) | Weight | | | Track Gauge A×B (mm) | Outline dimension(mm) L×W×H |
|----------------------|---------------------|----------------------------|------------------------|--------------|-----------------|---------------|---------------------|-----------------------|-----------------------|----------------|------|----------------------|-----------------------------|
| | High voltage (kV) | Tapping Range | Low Voltage | Vector Group | | | | | Insulation oil weight | | | | |
| 800 | 35; 38.5; | ±2× 2.5%; or ± 5% | 3.15; 6.3; 10.5; | Yd11 | 1300 | 9000 | 9000 | 6.5 | 1935 | 1020 | 3995 | 820 × 820 | 2435×1240×2300 |
| 1000 | | | | | 1500 | 12000 | 12000 | | 2140 | 1055 | 4125 | 820 × 820 | 2482×1380×2320 |
| 1250 | | | | | 1800 | 14000 | 14000 | | 2290 | 1085 | 4200 | 820 × 820 | 2532×1520×2350 |
| 1600 | | | | | 2100 | 17000 | 17000 | | 2475 | 1175 | 4290 | 1070×1070 | 2582×1710×2440 |
| 2000 | | | | | 2600 | 19000 | 19000 | | 2790 | 1295 | 5380 | 1070×1070 | 2632×1884×2537 |
| 2500 | | | | | 3100 | 21000 | 21000 | | 3295 | 1425 | 5920 | 1070×1070 | 2691×2105×2597 |
| 3150 | | | 3800 | 24500 | 24500 | 4045 | 1735 | 7645 | 1070×1070 | 2842×2430×2617 | | | |
| 4000 | | | 4600 | 29000 | 29000 | 4815 | 1950 | 8905 | 1070×1070 | 2936×2446×2697 | | | |
| 5000 | | | 5500 | 33000 | 33000 | 6060 | 2095 | 10175 | 1070×1070 | 2815×1720×3135 | | | |
| 6300 | | | 6500 | 37000 | 37000 | 7410 | 2525 | 12330 | 1475×1475 | 3240×2730×3040 | | | |
| 8000 | | | 8500 | 42000 | 42000 | 8900 | 2930 | 14855 | 1475×1475 | 3360×2695×3160 | | | |
| 10000 | | | 10000 | 48300 | 48300 | 10700 | 3350 | 18100 | 1475×1475 | 3400×3460×3320 | | | |
| 12500 | | | 12000 | 57300 | 57300 | 11840 | 5066 | 21505 | 1475×1475 | 4000×3896×4000 | | | |
| 16000 | | | 14500 | 70000 | 70000 | 15260 | 7411 | 29800 | 1475×1475 | 4300×3250×3820 | | | |
| 20000 | | | 16000 | 83000 | 83000 | 16030 | 7800 | 31500 | 2040×1475 | 4360×3600×4100 | | | |
| 25000 | | | 2000 | 103000 | 103000 | 19200 | 8900 | 36800 | 2040×1475 | 4420×3800×4180 | | | |
| 31500 | | | 25400 | 125000 | 125000 | 22100 | 9800 | 43000 | 2040×1475 | 4680×4100×4270 | | | |

TECHNICAL SPECIFICATION FOR 10KV SZ9-M SERIES DUAL WINDING ON-LOAD VOLTAGE REGULATING OIL-IMMERSED POWER TRANSFORMER(Table 5)

| Rated Capacity (kVA) | Voltage combination | | | | No-load loss(W) | Load Loss (W) | No-Load Current (%) | Impedance Voltage (%) | Weight | | | Track Gauge A×B (mm) | Outline dimension(mm) L×W×H |
|----------------------|---------------------|----------------------------|-------------|---------------------|-----------------|---------------|---------------------|-----------------------|-----------------------|-----|------|----------------------|-----------------------------|
| | High voltage (kV) | Tapping Range | Low Voltage | Vector Group | | | | | Insulation oil weight | | | | |
| 200 | 6; | ±4×2.5%; or ±3×2.5%; | 0.4 | Yyno or Dyn11 | 480 | 2600 | 1.3 | 4.0 | 640 | 180 | 1100 | 550 × 550 | 1400 × 850 × 1500 |
| 250 | 6.3; 10; | | | | 560 | 3050 | 1.2 | | 770 | 230 | 1290 | 550 × 550 | 1450 × 910 × 1560 |
| 315 | | | | | 670 | 3650 | 1.1 | | 880 | 250 | 1500 | 550 × 550 | 1460 × 1050 × 1580 |

S9,S9-M SERIES THREE PHASE OIL-IMMERSED POWER TRANSFORMER

CONTINUED ON TABLE 5



| Rated Capacity (kVA) | Voltage combination | | | | No-load loss(W) | Load Loss (W) | No-Load Current (%) | Impedance Voltage (%) | Weight | | | Track Gauge A×B (mm) | Outline dimension(mm) L×W×H |
|----------------------|---------------------|----------------------|-------------|---------------------------|-----------------|---------------|---------------------|-----------------------|-----------------------|------|------|----------------------|-----------------------------|
| | High voltage (kV) | Tapping Range | Low Voltage | Vector Group | | | | | Insulation oil weight | | | | |
| 400 | 6; 6.3; 10; | ±4×2.5%; or ±3×2.5%; | 0.4 | Y _{yno} or Dyn11 | 800 | 4300 | 1.0 | 4.0 | 1055 | 310 | 1720 | 550×750 | 1600×1120×1660 |
| 500 | | | | | 960 | 5150 | 1.0 | | 1235 | 330 | 2010 | 550×750 | 1660×1280×1720 |
| 630 | | | | | 1200 | 6200 | 0.9 | 4.5 | 1520 | 660 | 2950 | 660×850 | 2010×1325×1930 |
| 800 | | | | | 1400 | 7500 | 0.8 | | 1760 | 880 | 3450 | 660 850 | 2060 1335 2010 |
| 1000 | | | | | 1700 | 10300 | 0.7 | | 1935 | 980 | 4050 | 820 850 | 2050 1340 2070 |
| 1250 | | | | | 1950 | 12000 | 0.6 | | 2285 | 980 | 4250 | 820 850 | 2120 1350 2130 |
| 1600 | | | | | 2400 | 14500 | 0.6 | 5.5 | 2720 | 1080 | 4500 | 820 900 | 2180 1370 2190 |
| 2000 | | | | | 2900 | 17500 | 0.6 | | 3460 | 1220 | 620 | 820 900 | 2930 1970 2900 |

TECHNICAL SPECIFICATION FOR 35KV SZ9 SERIES ON-LOAD VOLTAGE REGULATING OIL-IMMERSED TYPE POWER TRANSFORMER(TABLE 6)



| Rated Capacity (kVA) | Voltage combination | | | | No-load loss(W) | Load Loss (W) | No-Load Current (%) | Impedance Voltage (%) | Weight | | | Track Gauge A×B (mm) | Outline dimension(mm) L×W×H |
|----------------------|---------------------|---------------|-------------------|--------------|-----------------|---------------|---------------------|-----------------------|-----------------------|-------|-----------|----------------------|-----------------------------|
| | High voltage (kV) | Tapping Range | Low Voltage | Vector Group | | | | | Insulation oil weight | | | | |
| 2000 | 35; 38.5; | ±3×2.5 | 6; 6.3; 10.5; 11; | Yd11 | 2900 | 20000 | 1.0 | 6.5 | 3340 | 1725 | 5785 | 1070×1070 | 3170×1820×2727 |
| 2500 | | | | | 3300 | 22000 | 1.0 | | 4070 | 2060 | 6570 | 1070×1070 | 3280×1980×2835 |
| 3150 | | | | | 4000 | 26000 | 0.9 | 7.0 | 4620 | 2310 | 7480 | 1070×1070 | 3370×2160×3065 |
| 4000 | | | | | 4900 | 30500 | 0.9 | | 5140 | 2560 | 9160 | 1070×1070 | 3410×2470×3180 |
| 5000 | | | | | 5800 | 35000 | 0.85 | 7.5 | 5600 | 2700 | 11000 | 1475×1070 | 3500×2800× |
| 6300 | | | | | 7000 | 39000 | 0.8 | | 7330 | 3190 | 13000 | 1475×1475 | 4010×2960×3730 |
| 8000 | | | | | 8900 | 44000 | 0.8 | | 8700 | 3760 | 16400 | 1475×1475 | 4190×2980×3880 |
| 10000 | | | | | 10500 | 51000 | 0.75 | | 9900 | 4100 | 18200 | 1475×1475 | 4350×3620×3725 |
| 12500 | | | | 12600 | 60500 | 0.75 | 8.0 | 11300 | 4700 | 21500 | 1475×1475 | 4450×4000×3700 | |
| 16000 | | | | 15200 | 69300 | 0.7 | | 16100 | 8200 | 30600 | 1475×1475 | 5030×3940×4057 | |
| 20000 | | | | 19500 | 89000 | 0.7 | 8.5 | 16800 | 8300 | 33400 | 2040×1475 | 5060×3980×4108 | |
| 25000 | | | | 21000 | 105000 | 0.6 | | 20400 | 9800 | 39300 | 2040×1475 | 5080×4260×4168 | |
| 31500 | | | | 25700 | 125000 | 0.6 | | 24300 | 11000 | 46000 | 2040×1475 | 5300×4300×4377 | |

INSULATION LEVEL

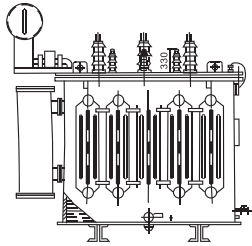
| Type | Voltage rank | Rated Short-time power frequency withstand voltage(Effective value) | Rated lightning impulse withstand voltage(Peak value) |
|-------|--------------|---|---|
| S9 | 6 | 25 | 60 |
| S9-M | 10 | 35 | 75 |
| SZ9 | 35 | 85 | 200 |
| SZ9-M | | | |

TECHNICAL SPECIFICATION FOR 110KV S(F) SERIES 6300~31500KVA NO-LOAD VOLTAGE REGULATING OIL-IMMERSED TYPE POWER TRANSFORMER(TABLE 7)

| Rated Capacity (kVA) | Voltage combination | | | | No-load loss(W) | Load Loss (W) | No-Load Current (%) | Impedance Voltage (%) | Track Gauge A×B (mm) |
|----------------------|---------------------|---------------|-------------------|--------------|-----------------|---------------|---------------------|-----------------------|----------------------|
| | High voltage (kV) | Tapping Range | Low Voltage | Vector Group | | | | | |
| 6300 | 110 | ±2×2.5% | 6.3; 6; 10.5; 11; | Ynd11 | 9280 | 36900 | 1 | 10.5 | 1475×1475 |
| 8000 | | | | | 11200 | 45000 | 0.95 | | |
| 10000 | | | | | 13200 | 53100 | 0.9 | | |
| 12500 | | | | | 15600 | 63000 | 0.85 | | |
| 16000 | | | | | 18800 | 77400 | 0.8 | | |
| 20000 | | | | | 22000 | 93600 | 0.75 | | |
| 25000 | | | | | 26000 | 110700 | 0.7 | | |
| 31500 | | | | | 30800 | 133200 | 0.65 | | |

S9,S9-M SERIES THREE PHASE OIL-IMMERSED POWER TRANSFORMER

TECHNICAL SPECIFICATION FOR 10KV S11 SERIES NO-LOAD VOLTAGE REGULATING OIL-IMMERSED TYPE POWER TRANSFORMER(Table 8)



| Rated Capacity (kVA) | Voltage combination | | | | No-load loss(W) | Load Loss (W) | No-Load Current (%) | Impedance Voltage (%) | Weight | | | Track Gauge A×B (mm) | Outline dimension(mm) L×W×H |
|----------------------|-----------------------|-------------------|-------------|---------------|-----------------|---------------|---------------------|-----------------------|-----------------------|-----|------|----------------------|-----------------------------|
| | High voltage (kV) | Tapping Range | Low Voltage | Vector Group | | | | | Insulation oil weight | | | | |
| 30 | 6; 6.3; 10; 10.5; 11; | ±2× 2.5%; or ± 5% | 0.4 | Yyno or Dyn11 | 100 | 600 | 2.1 | 4.0 | 150 | 75 | 295 | 400×400 | 790×600×970 |
| 50 | | | | | 130 | 870 | 2.0 | | 210 | 89 | 390 | 400×400 | 810×610×1040 |
| 63 | | | | | 150 | 1040 | 1.9 | | 255 | 95 | 435 | 400×400 | 825×670×1060 |
| 80 | | | | | 180 | 1250 | 1.8 | | 280 | 120 | 510 | 400×450 | 855×630×1110 |
| 100 | | | | | 200 | 1500 | 1.6 | | 360 | 125 | 565 | 400×550 | 1090×620×1160 |
| 125 | | | | | 240 | 1800 | 1.5 | | 410 | 135 | 685 | 400×550 | 1140×650×1245 |
| 160 | | | | | 290 | 2200 | 1.4 | | 480 | 155 | 800 | 550×550 | 1160×650×1250 |
| 200 | | | | | 330 | 2600 | 1.3 | | 563 | 168 | 900 | 550×550 | 1260×710×1250 |
| 250 | | | | | 400 | 3050 | 1.2 | | 665 | 200 | 1100 | 550×650 | 1340×740×1320 |
| 315 | | | | | 480 | 3650 | 1.1 | | 751 | 230 | 1260 | 550×650 | 1345×760×1320 |
| 400 | | | | | 570 | 4300 | 1.0 | | 880 | 235 | 1360 | 550×650 | 1370×770×1380 |
| 500 | | | | | 680 | 5150 | 1.0 | | 1100 | 340 | 1730 | 660×750 | 1570×910×1030 |
| 630 | | | | | 810 | 6200 | 0.9 | | 1300 | 380 | 2095 | 660×750 | 1560×880×1510 |
| 800 | | | | | 900 | 7500 | 0.8 | | 1585 | 465 | 2590 | 820×850 | 1670×980×1600 |
| 1000 | | | | | 1150 | 10300 | 0.7 | | 1720 | 510 | 2920 | 820×850 | 1790×1090×1660 |
| 1250 | | | | | 1360 | 12000 | 0.6 | | 2075 | 625 | 3520 | 820×850 | 1810×1070×1765 |
| 1600 | 1640 | 14500 | 0.6 | 2215 | 640 | 3705 | 820×850 | 1930×1160×1785 | | | | | |

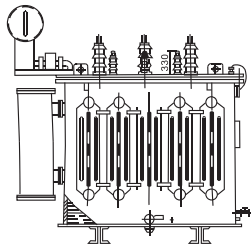
TECHNICAL SPECIFICATION FOR 10KV SH15 AMORPHOUS ALLOYS NO-LOAD VOLTAGE REGULATING OIL-IMMERSED TYPE POWER TRANSFORMER(Table 9)

| Rated Capacity (kVA) | Voltage combination | | | | No-load loss(W) | Load Loss (W) | No-Load Current (%) | Impedance Voltage (%) | Weight | | | Track Gauge A×B (mm) | Outline dimension(mm) L×W×H |
|----------------------|-----------------------|-------------------|-------------|--------------|-----------------|---------------|---------------------|-----------------------|-----------------------|-----|------|----------------------|-----------------------------|
| | High voltage (kV) | Tapping Range | Low Voltage | Vector Group | | | | | Insulation oil weight | | | | |
| 30 | 6; 6.3; 10; 10.5; 11; | ±2× 2.5%; or ± 5% | 0.4 | Dyn11 | 33 | 600 | 1.7 | 4.0 | 225 | 100 | 420 | 400×400 | 790×600×970 |
| 50 | | | | | 43 | 870 | 1.3 | | 305 | 120 | 535 | 400×400 | 810×610×1040 |
| 63 | | | | | 50 | 1040 | 1.2 | | 350 | 130 | 595 | 400×400 | 825×670×1060 |
| 80 | | | | | 60 | 1250 | 1.1 | | 405 | 135 | 660 | 400×450 | 855×630×1110 |
| 100 | | | | | 75 | 1500 | 1.0 | | 430 | 155 | 770 | 400×550 | 1090×620×1160 |
| 125 | | | | | 85 | 1800 | 0.9 | | 500 | 165 | 860 | 400×550 | 1140×650×1245 |
| 160 | | | | | 100 | 2200 | 0.7 | | 595 | 185 | 990 | 550×550 | 1160×650×1250 |
| 200 | | | | | 120 | 2600 | 0.7 | | 675 | 205 | 1110 | 550×550 | 1260×710×1250 |
| 250 | | | | | 140 | 3050 | 0.7 | | 810 | 220 | 1275 | 550×650 | 1340×740×1320 |
| 315 | | | | | 170 | 3650 | 0.5 | | 945 | 245 | 1475 | 550×650 | 1345×760×1320 |
| 400 | | | | | 200 | 4300 | 0.5 | | 1195 | 280 | 1835 | 550×650 | 1370×770×1380 |
| 500 | | | | | 240 | 5150 | 0.5 | | 1375 | 335 | 2130 | 660×750 | 1570×910×1030 |
| 630 | | | | | 320 | 6200 | 0.3 | | 1610 | 470 | 2605 | 660×750 | 1560×880×1510 |
| 800 | | | | | 380 | 7500 | 0.3 | | 1910 | 575 | 3090 | 820×850 | 1670×980×1600 |
| 1000 | | | | | 450 | 10300 | 0.3 | | 2130 | 670 | 3570 | 820×850 | 1790×1090×1660 |
| 1250 | | | | | 530 | 12000 | 0.3 | | 2510 | 710 | 4140 | 820×850 | 1810×1070×1765 |
| 1600 | 630 | 14500 | 0.3 | 3045 | 820 | 4950 | 820×850 | 1930×1160×1785 | | | | | |



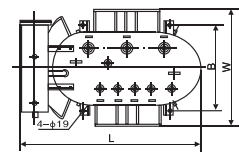
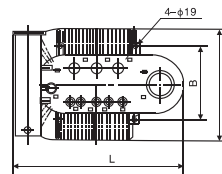
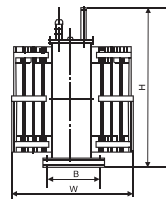
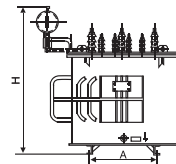
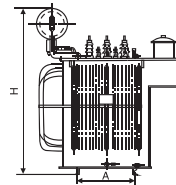
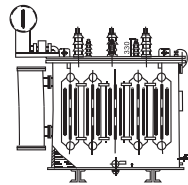
S9,S9-M SERIES THREE PHASE OIL-IMMERSED POWER TRANSFORMER

TECHNICAL SPECIFICATION FOR 10KV S11-M • D UNDERGROUND NO-LOAD VOLTAGE REGULATING OIL-IMMERSED TYPE POWER TRANSFORMER (Table 10)



| Rated Capacity (kVA) | Voltage combination | | | | No-load loss(W) | Load Loss (W) | No-Load Current (%) | Impedance Voltage (%) | Weight | | | Track Gauge A×B (mm) | Outline dimension(mm) L×W×H |
|----------------------|---------------------|--------------------------|-------------|---------------------|-----------------|---------------|---------------------|-----------------------|-----------------------|------|---------|----------------------|-----------------------------|
| | High voltage (kV) | Tapping Range | Low Voltage | Vector Group | | | | | Insulation oil weight | | | | |
| 400 | 6; 6.3; 10; | ±4×2.5% or ±3×2.5% | 0.4 | Yyno or Dyn11 | 800 | 4300 | 1.0 | 4.0 | 1055 | 310 | 1720 | 550×750 | 1600×1120×1660 |
| 500 | | | | | 960 | 5150 | 1.0 | | 1235 | 330 | 2010 | 550×750 | 1660×1280×1720 |
| 630 | | | | | 1200 | 6200 | 0.9 | 1520 | 660 | 2950 | 660×850 | 2010×1325×1930 | |
| 800 | | | | | 1400 | 7500 | 0.8 | 1760 | 880 | 3450 | 660×850 | 2060×1335×2010 | |
| 1000 | | | | | 1700 | 10300 | 0.7 | 1935 | 980 | 4050 | 820×850 | 2050×1340×2070 | |
| 1250 | | | | | 1950 | 12000 | 0.6 | 2285 | 980 | 4250 | 820×850 | 2120×1350×2130 | |
| 1600 | | | | | 2400 | 14500 | 0.6 | 2720 | 1080 | 4500 | 820×900 | 2180×1370×2190 | |
| 2000 | | | | | 2900 | 17500 | 0.6 | 3460 | 1220 | 620 | 820×900 | 2930×1970×2900 | |

TRANSFORMER OUTLINE DIMENSION PLEASE SEE DRAWING



S9-M

SZ-9 SZ9-M

S9

- Note:1.The weight, track gauge,outline dimension of SZ9-M,SZ9:10KV level please see table 5;
35KV level please see table 6.
2.The weight, track gauge,outline dimension of S9-M,S9:10KV level please see table 3;
35KV level please see table 4.